



iTivity Data

Automate the flow of data to and from devices
locked behind firewalls

Data: Your Untapped Potential

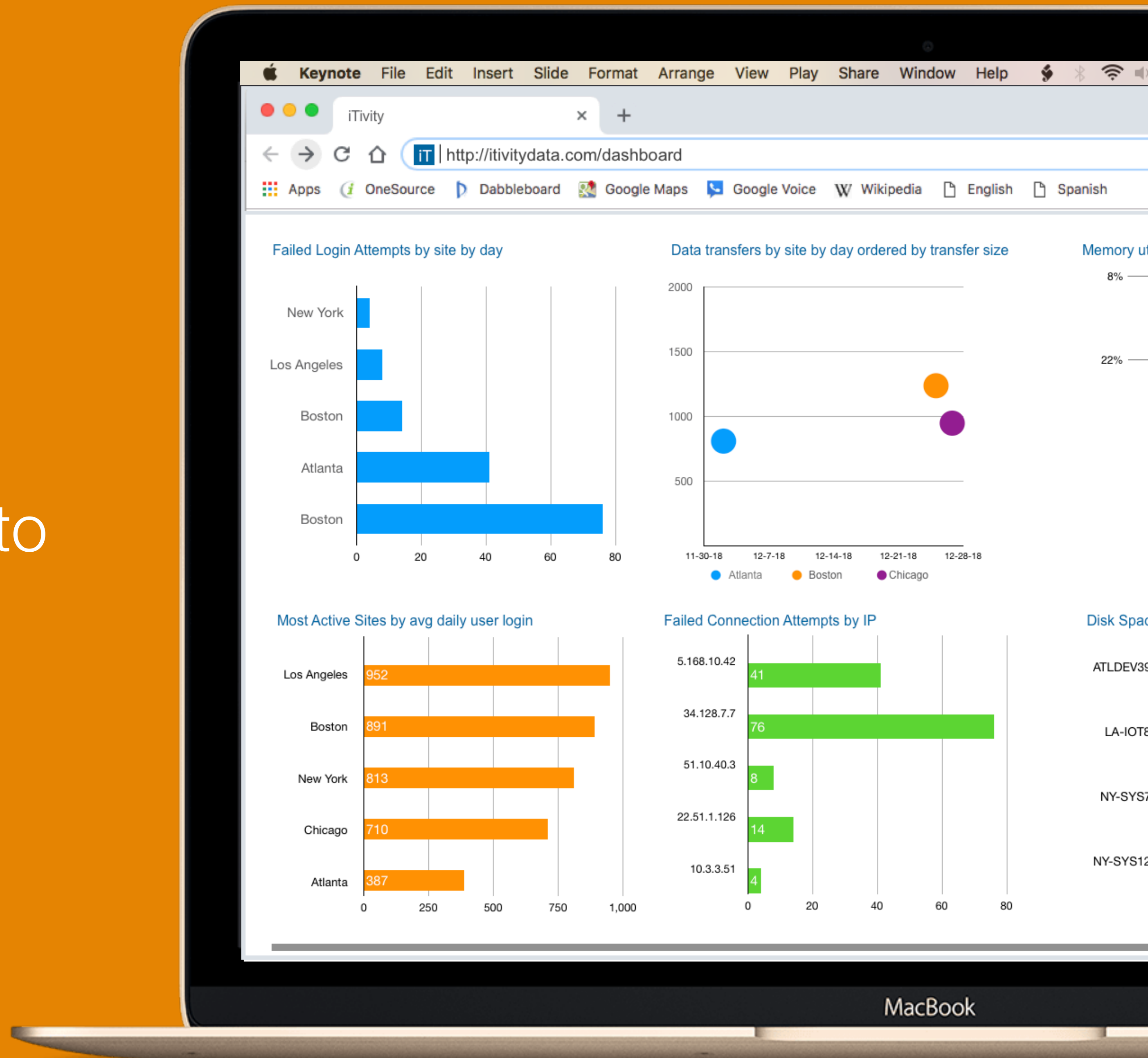
There are millions of dollars of value locked away on devices behind firewalls. iTivity lets you extract device data to build new revenue streams and lower maintenance costs.

- Build a cybersecurity offering that protects customers and generates revenue;
- Add-value to maintenance contracts with pre-emptive support.



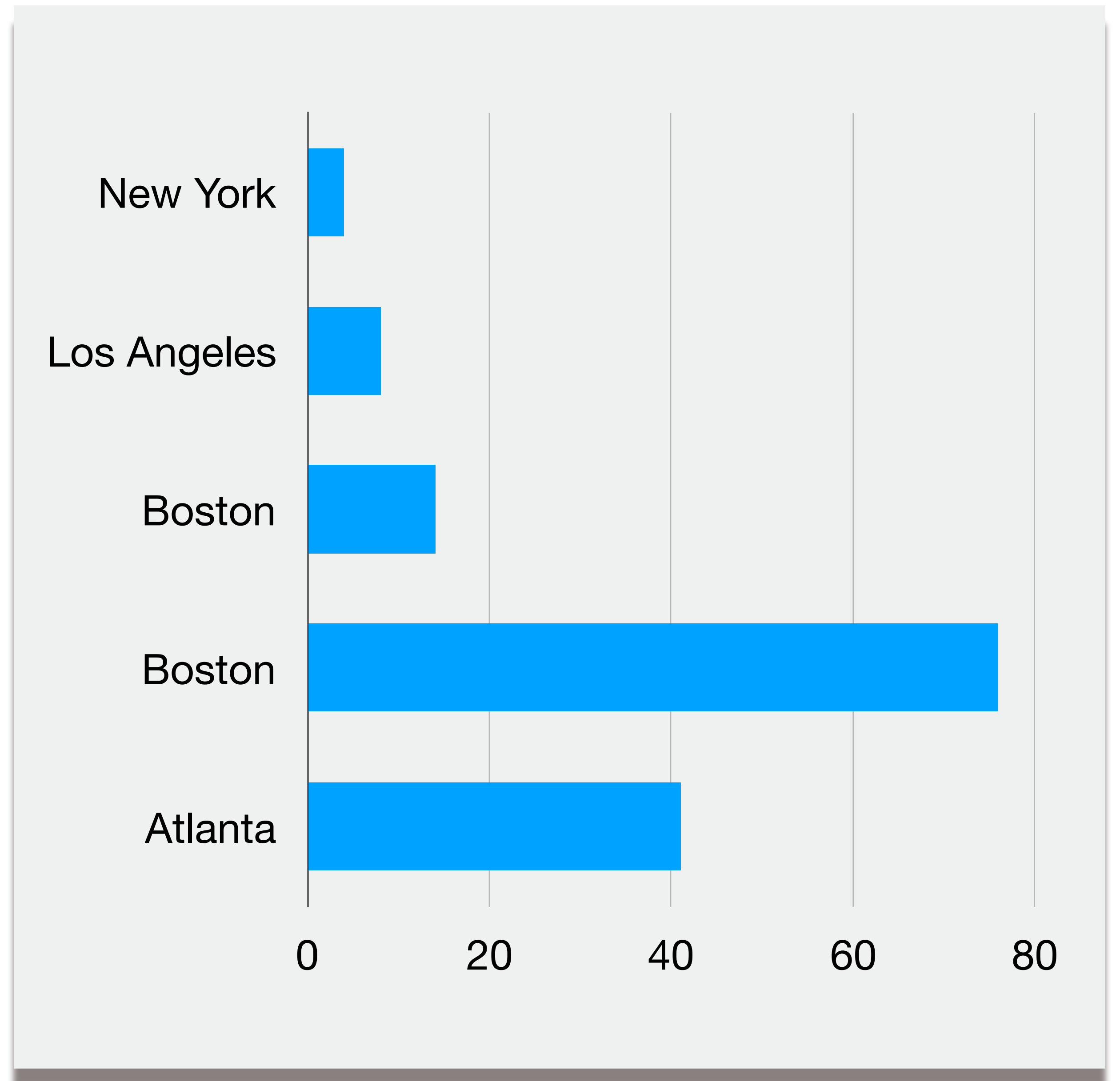
Security Analytics

iTivity Data provides a broad range of pre-defined analyses to keep you ahead of critical security and system management issues.



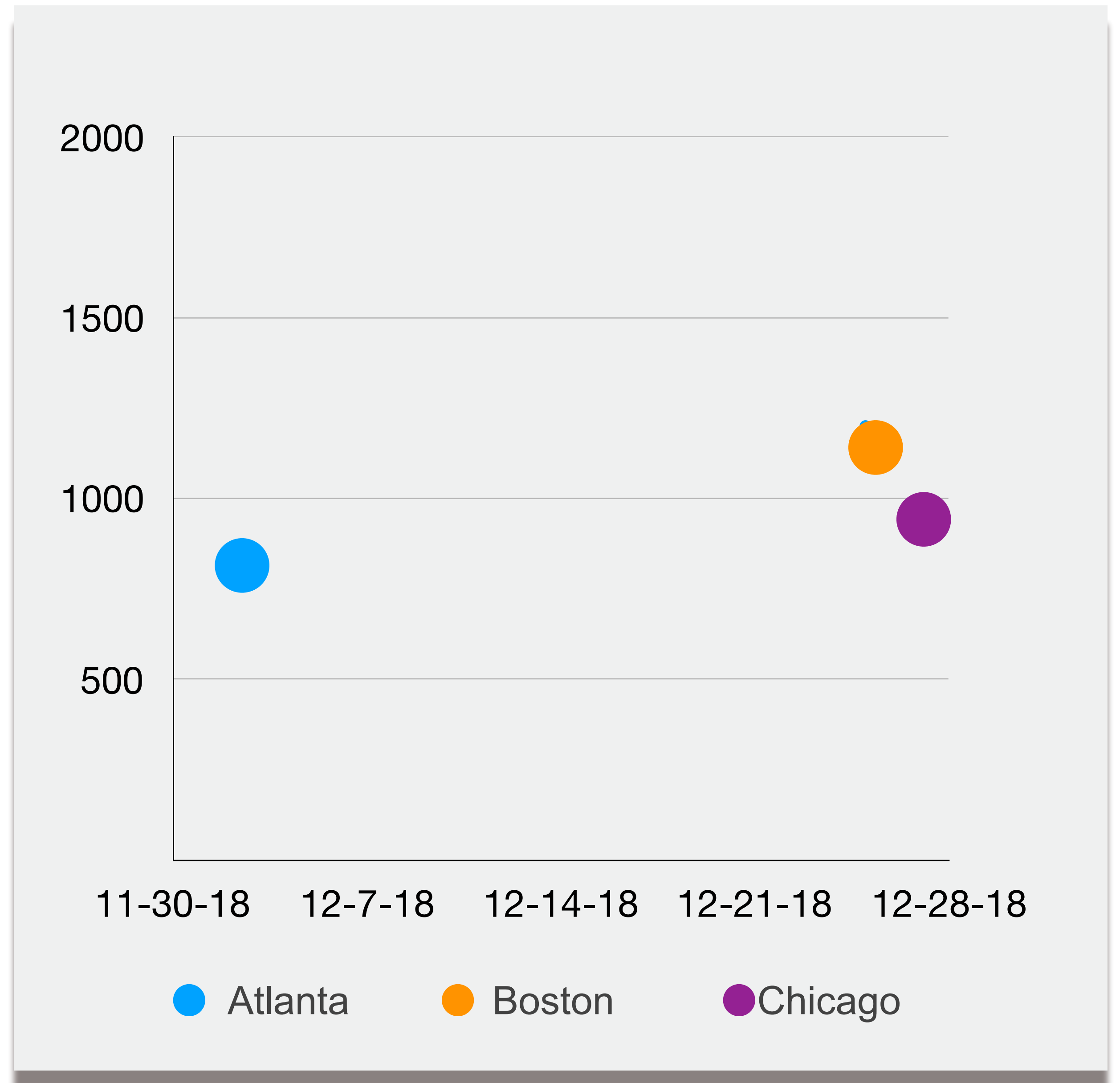
Security Analytics

Failed login attempts
by site, by day



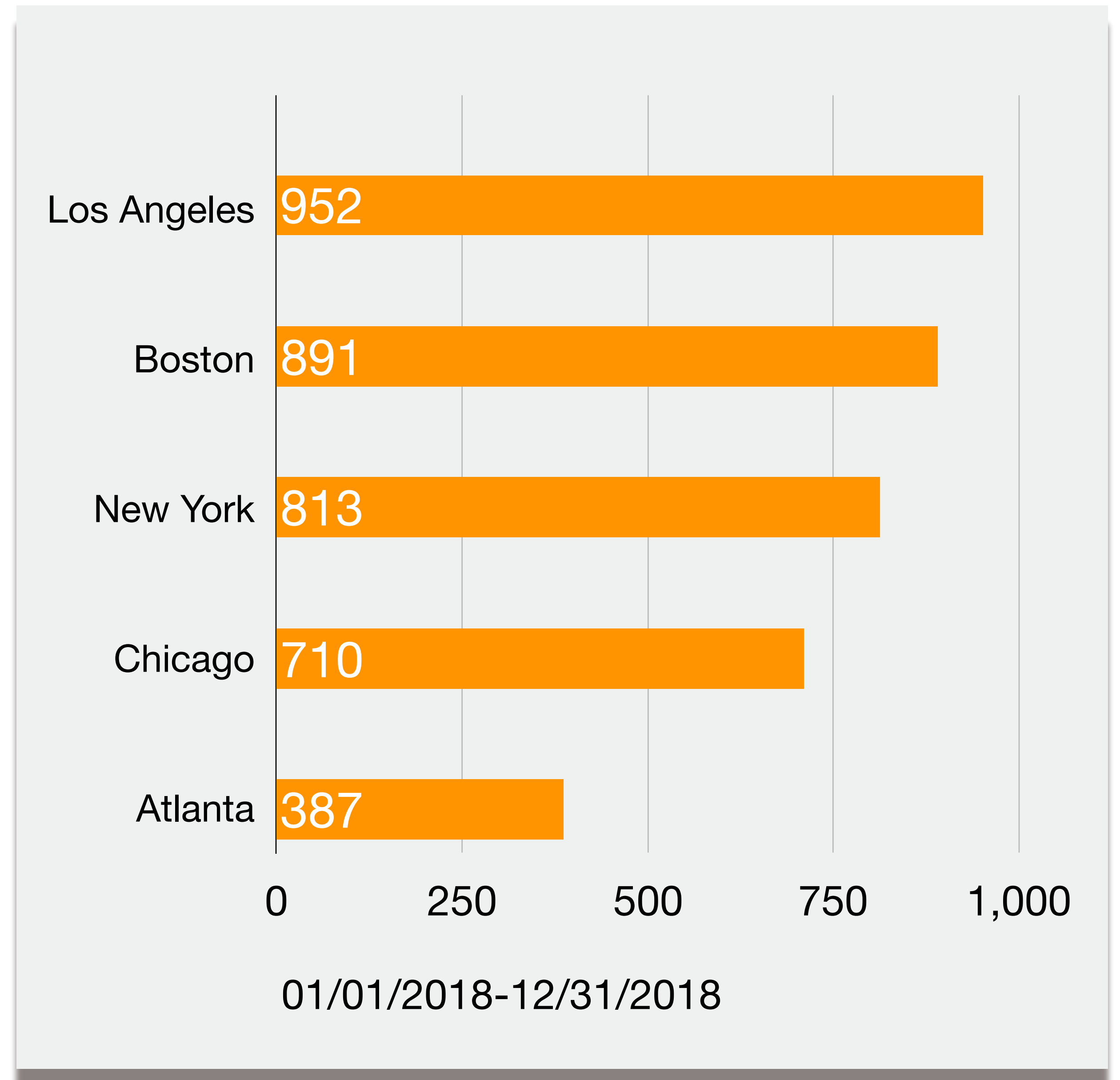
Security Analytics

Data transfers by site
by day, by transfer size



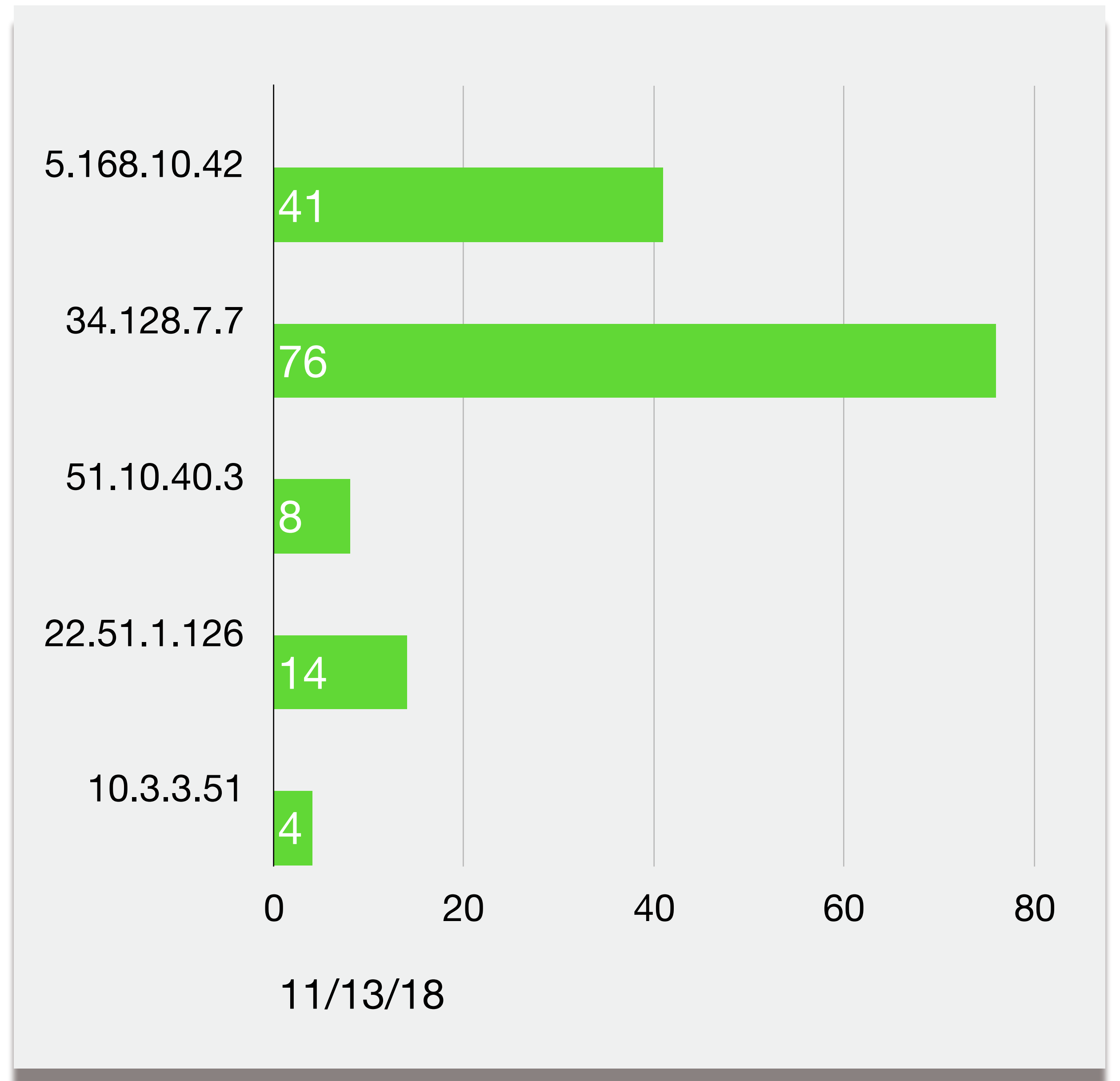
Security Analytics

Most active sites by
average daily user login



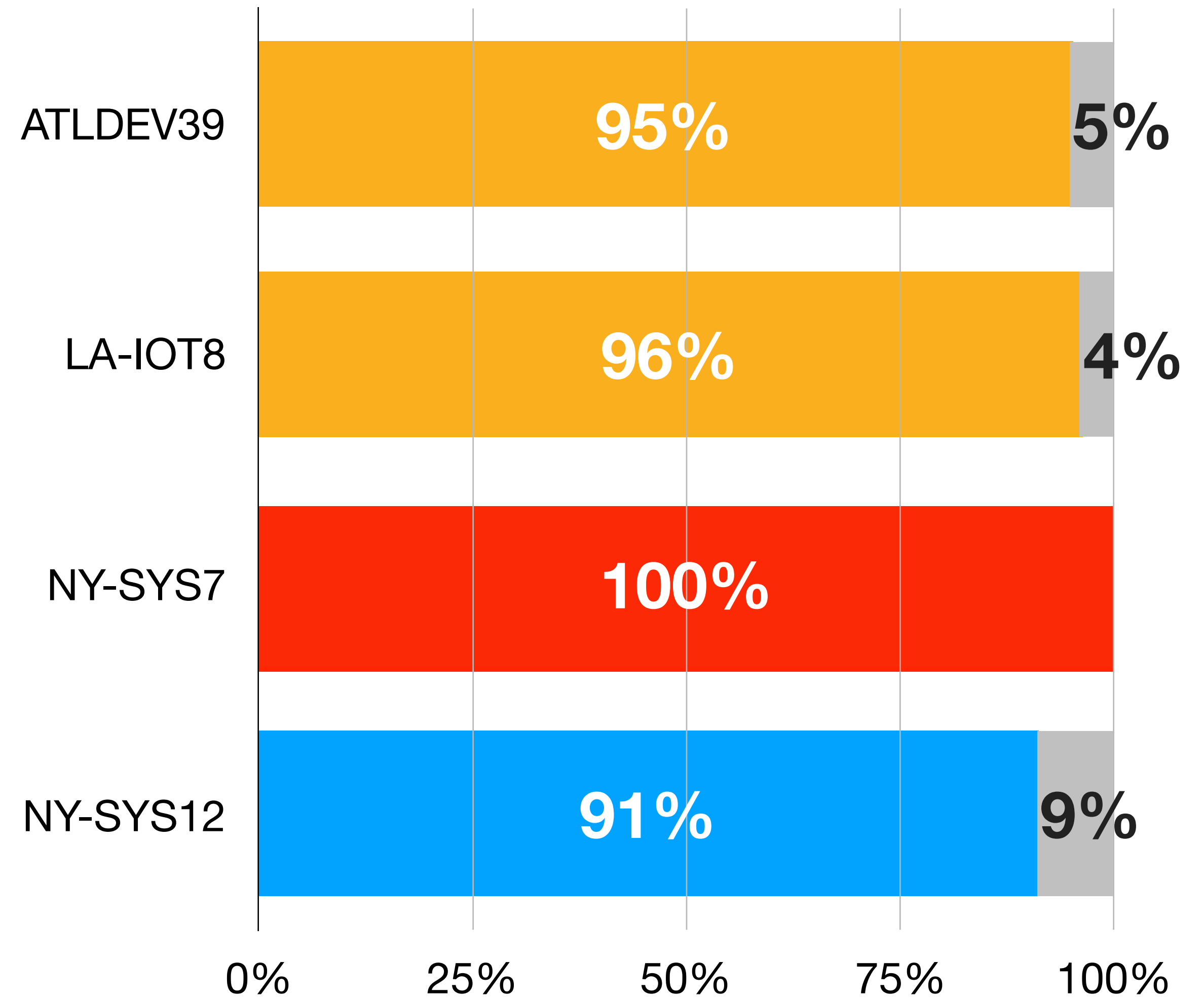
Security Analytics

Failed connection attempts by IP



Security Analytics

Disk Space Utilization
Above Threshold



System Alerts

Get critical alerts delivered right to your phone:

- Maximum CPU Utilization
- Disk Space Utilization above a threshold
- Memory Utilization above a threshold
- Systems down
- License usage (max used/day/site)





Integrate iTivity with Splunk to collect, analyze and act on the big data generated by your devices. Splunk's historical analysis, real-time insights and predictive analytics will improve your competitive position and your operations with insights into past, present and future device operations, user behavior and security threats.



Got Questions?

Send an email to sales@itivity.net. We'll schedule a call to walk through all the details on how your organization can best leverage the potential iTivity Data.

